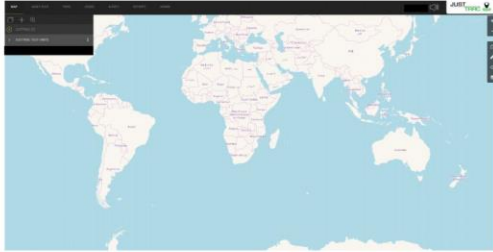
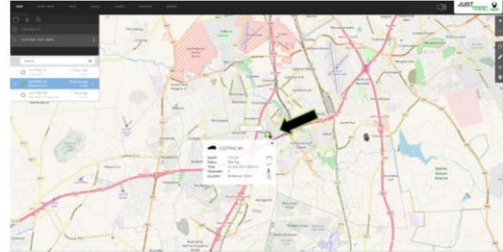


Support Page : Instructions

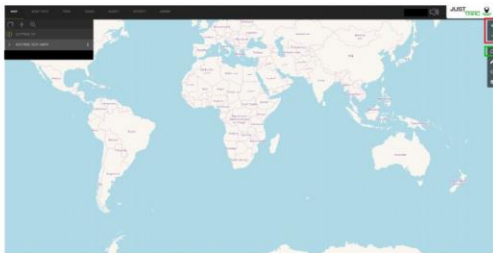


Landing Page of the Software - Select your group & then your device to track in the upper left hand corner of the screen. (i.e. JustTrac TEST UNITS, then your device/s shown)

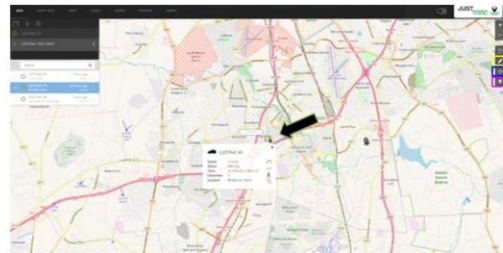


Map Display Changes - View the location of the device by clicking on the device icon. An information box will pop-up & give the device's real-time information: Current Speed / Status (moving or not) / Date & Time / Location.

Functions on the Right Hand Side of the Map

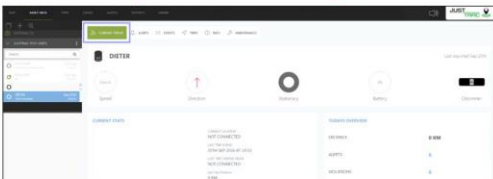


- "+" & "-" - Use this to zoom in (+) or zoom out (-) on the Map
- **Circular Icon** - use this to create No-Go Zones, Keep-In Zones, Routes (created on map) & Locations



- **Straight Linear Icon** - Measure distance on the Map
- **Target Icon** - Find the closest Asset / Device on the map from where you have pin pointed.
- **Squares Icon** - Toggle different options that should be displayed on the Map i.e. Routes Drawn + No-Go Zones

Asset Info Page - Remember: Select your device on the map to view device information!



■ **Current Status Bar** - Displays General Information



■ **Alerts Bar** - Show all the alerts, if any, that your device has sent. Choose specifics i.e. month / day. Alerts include entering No-Go Zone, going out of a Keep-In Zone, or any Alert that has been preset by the user.

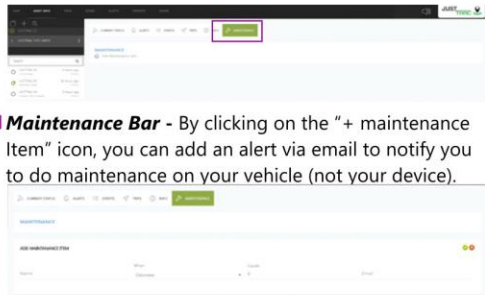


■ **Events Bar** - Get quick access to the device's trips on any date. Select the **Trips Bar** to see the trip/s on the Map.



■ **Info Bar** - View general information of the device.
Asset Contacts - Add a contact for the device, i.e. the owner / driver of the device with his details.

Asset Info Page (Continued) - Note: The justTRAC tracker may NOT be mounted to ANY VEHICLE IN ANY WAY!



Maintenance Bar - By clicking on the "+ maintenance Item" icon, you can add an alert via email to notify you to do maintenance on your vehicle (not your device).

When - Choose between Odometer or Date to measure your maintenance intervals.

Equals - If you choose Odometer, then you should enter

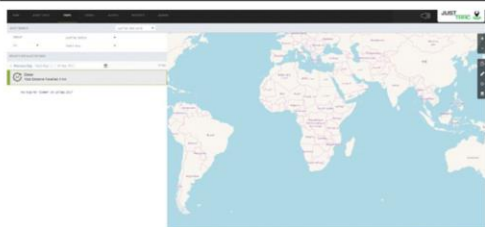
the required distance before the vehicle gets serviced, i.e. 5000km. (Note: you need to update the Equals field after the required distance & the email alert is reached.

Email - Enter the email address that the alert for maintenance needs to be sent to.

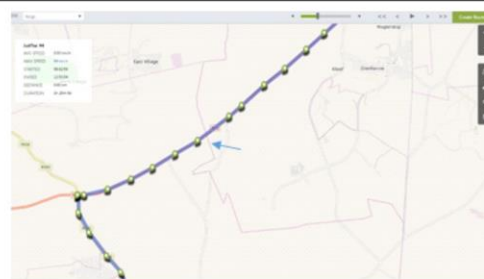
Date	Time	Location	Speed	Battery	Signal	Temperature	Altitude	Heading
2017-09-01 10:00:00	10:00:00	123.456789	100	100	100	10	100	100
2017-09-01 10:01:00	10:01:00	123.456789	100	100	100	10	100	100
2017-09-01 10:02:00	10:02:00	123.456789	100	100	100	10	100	100

Telemetry Button Info - this table displays the event that happened on the date, the time, the location as well as the current speed of the event & the maximum speed of the device. It also shows the battery life of the device. Odometer indicates how far the device has travelled until the time of the event. (Also includes all other trips)

TRIPS Tab

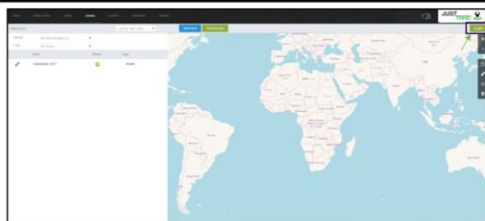


Trips Tab - Choose your group, then your device & the date to view the trips that have happened on the date



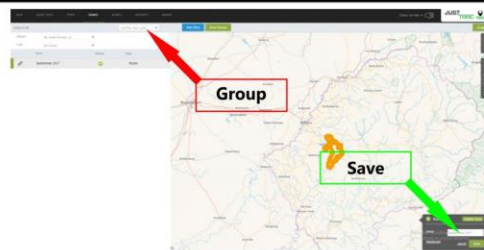
Example - If you zoom in & click on an icon, the asset info at that certain moment will be displayed.

ZONES Tab



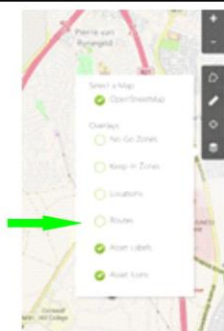
Create Zones - Such as Keep-In Zones / No-Go Zones / Drawn Routes etc.

Import a Route - Click on the gpx button in the top right hand corner & browse your computer to find & select the file. You can save the imported route in the ZONE group, & allows easier access for future use.



To assign a Zone / Route to device, select a Group & then select the Route, i.e. September 2017. Click on Save. The route will be visible to all devices in that specific group.

ZONES Tab - (Continued)



Return to the Map Tab, click on the Overlay Icon (4 stacked squares middle right), & click next to the "Routes" section in the small tab.